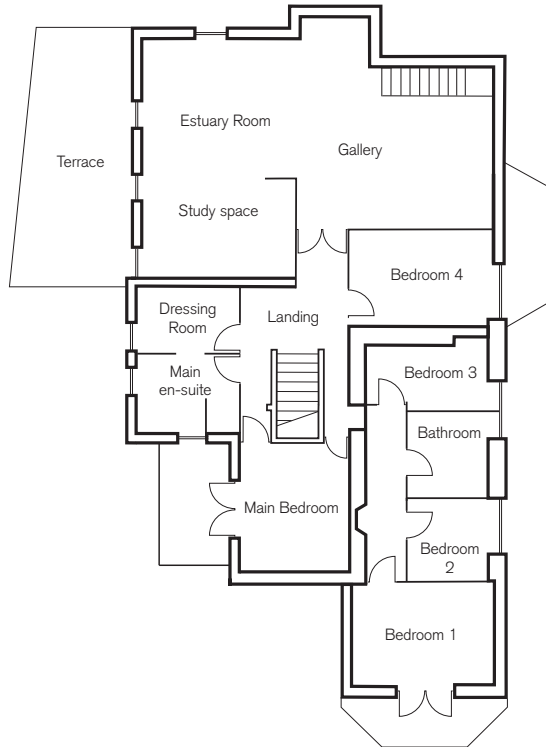


# SHALMAR HOLLOW FLOOR PLAN 12 GUESTS

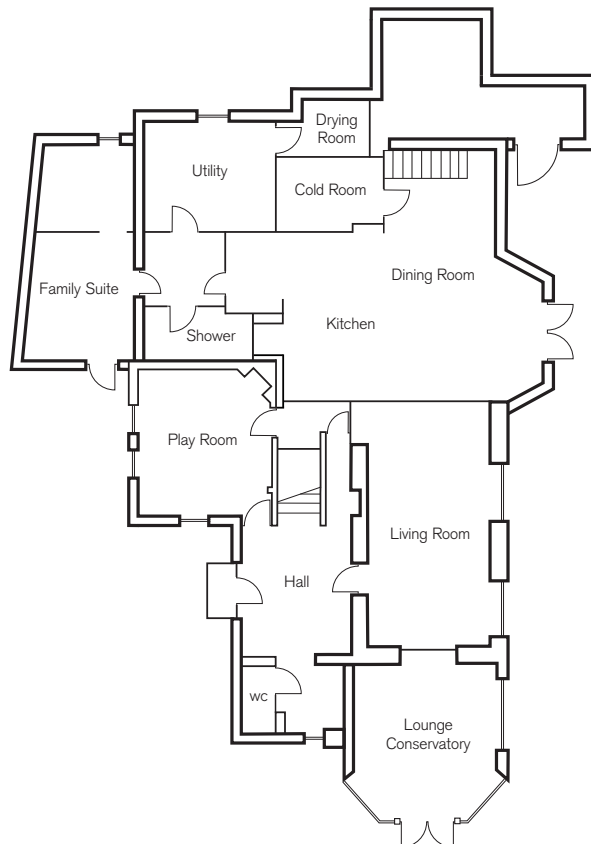


MAXIMUM GUESTS 12

SELF CATERING



First Floor



Ground Floor

**Location**

10-15 minutes walk to Porthilly Beach and 5 minutes drive to centre of Rock

**Master Bedroom**

Kingsize Bed

**Bedroom 1**

Kingsize Bed

**Bedroom 2**

Children's bunk room

**Bedroom 3**

Single bedroom

**Bedroom 4**

Children's Twin room

**Ground floor Family Suite**

Kingsize Bedroom with interconnected small twin size bedroom.

**Facilities**

- TV with DVD and Sky in Living Room
- TV with DVD player only in Ground Floor Bedroom
- B&G Music System in Kitchen/Dining and Upstairs Living Room
- Wood burning stove and logs
- Wifi
- Drying Room
- Large garden with Swing and Trampoline
- 2 patios with outdoor furniture
- Barbecue
- Outdoor pool
- Helipad

**Housekeeping**

- Weekly linen change and additional midweek clean
- Goosedown duvet and pillows (hypoallergenic on request)
- Egyptian cotton bedlinen
- Towels and pool towels provided
- Jo Malone toiletries