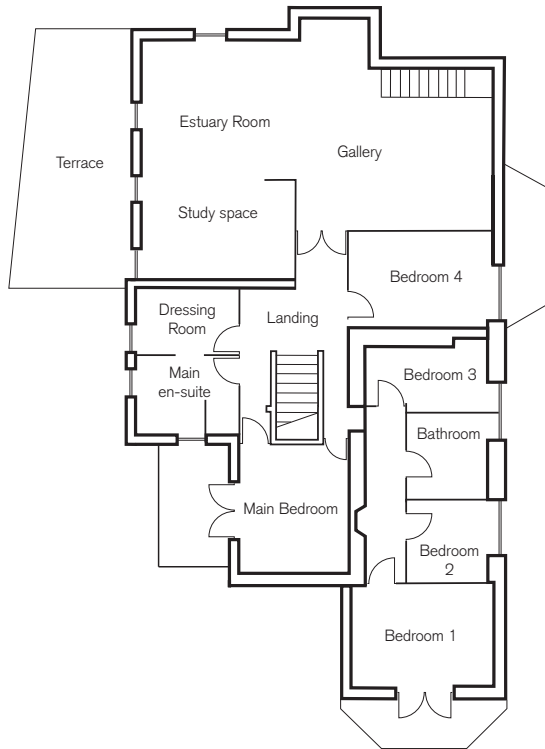


SHALMAR HOLLOW FLOOR PLAN 12 GUESTS

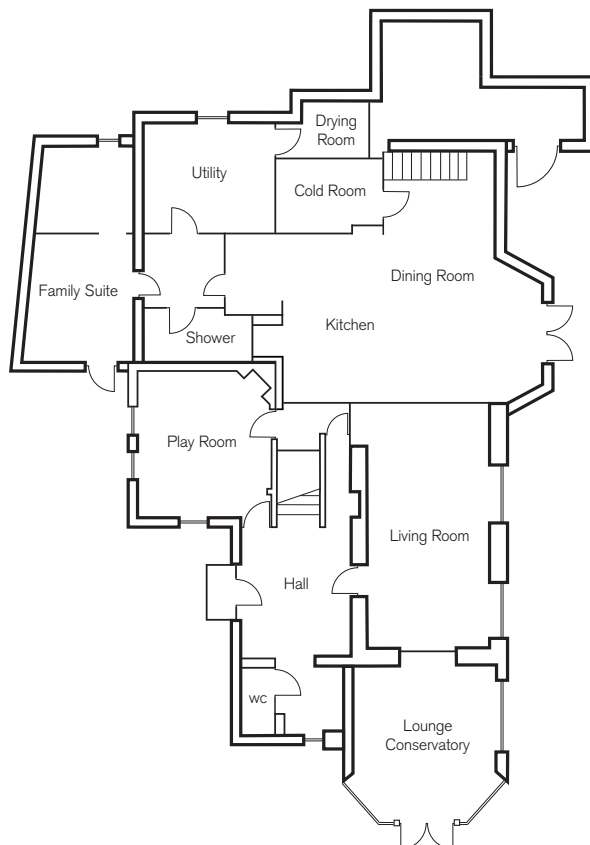


MAXIMUM GUESTS 12

SELF CATERING



First Floor



Ground Floor

Location

10-15 minutes walk to Porthilly Beach and 5 minutes drive to centre of Rock

Master Bedroom

Kingsize Bed

Bedroom 1

Kingsize Bed

Bedroom 2

Children's bunk room

Bedroom 3

Single bedroom

Bedroom 4

Children's Twin room

Ground floor Family Suite

Kingsize Bedroom with interconnected small twin size bedroom.

Facilities

- TV with DVD and Sky in Living Room
- TV with DVD player only in Ground Floor Bedroom
- B&G Music System in Kitchen/Dining and Upstairs Living Room
- Wood burning stove and logs
- Wifi
- Drying Room
- Large garden with Swing and Trampoline
- 2 patios with outdoor furniture
- Barbecue
- Outdoor pool
- Helipad

Housekeeping

- Weekly linen change and additional midweek clean
- Goosedown duvet and pillows (hypoallergenic on request)
- Egyptian cotton bedlinen
- Towels and pool towels provided
- Balance Me toiletries